



BUILDING BETTER FIREFIGHTERS

# THE 5 MINUTE TRUCK CLINIC™

BY BRYAN T SMITH

## THE HALLIGAN BAR PART I

Before the engine can push the line in to extinguish the fire, before the truck can start search and rescue we have to gain entry into the fire occupancy. Forcible entry is often one of the first and most important operations performed at the scene of a fire. Before we can become proficient at performing forcible entry we must possess a thorough understanding of the tools involved. In this article we will test your knowledge of the Halligan bar to increase your knowledge and skill to make sure you can use the tool to its full potential.

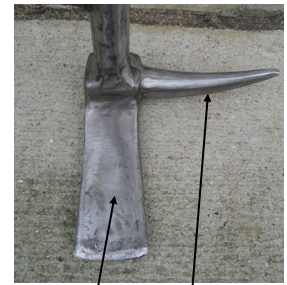
- How familiar are you with your halligan?
- Can you name all of its parts?
- Do you know the intended purpose of each part?



- The Standard Halligan is 30" long two inches shorter than most residential door ways.
- The **Shaft** is hexagon shaped for better grip and is 15/16's in diameter.
- The **Fork** is 6 inches long with a beveled side and a concave side. The **Fork** is tapered to a chiseled edge and is 3 inches wide at its farthest end.
- It is anchored at the opposite end by the **Adz** which has a slight bevel and is tapered to a chiseled edge and the **Pike** which has a slight arch and is tapered to a point.

Get out to your Truck grab the Halligan and see how many parts you can name.

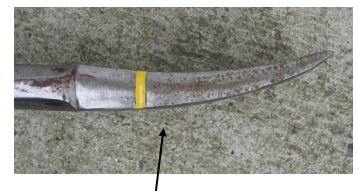
### HALLIGAN PARTS



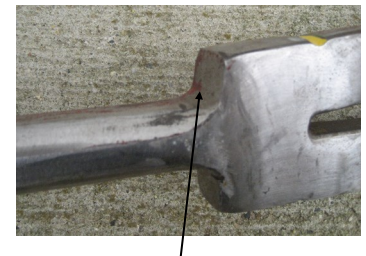
ADZ and PIKE



FORK (6" long 3" wide



BEVELED side of FORK



FORK SHOULDER

## THE HISTORY OF THE HALLIGAN BAR



Chief Hugh Halligan, FDNY

In 1948 Chief Halligan introduced a design to make improvements to the "Kelly Tool" developed by FDNY Captain John Kelly of L-163. The Halligan tool was drop-forged rather than welded and weighed in at 8.5lbs. While today's version has been refined it is essentially the same tool that Chief Halligan invented. This tool can still be found on almost every piece of fire apparatus in service today.

Copyright 2013

Bryan T Smith

[FirefighterToolbox.com](http://FirefighterToolbox.com)